

PRODUCT OVERVIEW

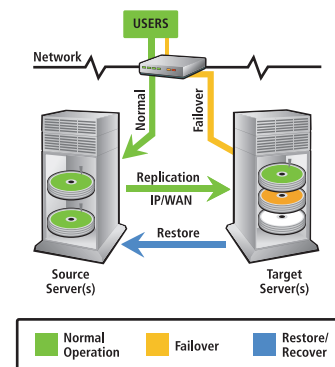
DOUBLE-TAKE® SERVER RECOVERY OPTION

If the process of recovering your entire server sounds like a nightmare, it's time to wake up to a simplified, fail-proof solution.

Have you recently recovered a production server using traditional backup solutions like tape? The complexity of traditional recovery solutions compounds an already difficult situation, and heightens the opportunity for human error. Speed and quality of recovery are extremely important when customers and employees are relying on access to critical data, but the average restoration takes hours at best. And, with solutions like tape backup, even a successful recovery results in the loss of any data that is new or has changed since the backup was made.

Double-Take,® when combined with the Double-Take Server Recovery Option (SRO), provides a single solution to continuously protect and recover an entire server. Protection is provided by the industry-proven real-time replication of Double-Take while recovery is performed by the Server Recovery Option. The Recovery Manager, provided as part of the Double-Take Server Recovery Option, presents the recovery task of a server as a series of easy to understand steps. Because Double-Take replication protects the entire production server - its operating system, applications and data, restoring the server encompasses as few steps as possible and provides a significantly better RTO than existing solutions such as tape backup.

How Double-Take Works



Double-Take Server Recovery Option Continuous, whole-server protection using Double-Take

The Double-Take Server Recovery Option (SRO) is used in conjunction with Double-Take and its replication technology, the world's most relied-upon solution for accessible and affordable data protection solution for disaster recovery and centralized backup.

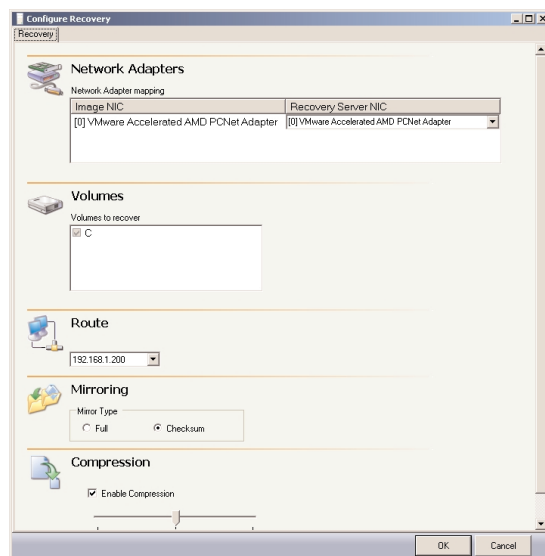
Easy implementation and management

Simplified full server connection creation

The Double-Take SRO features additions to the Double-Take Management Console that provide an easy-to-follow wizard for creating a connection that protects the entire server.

Flexible Protection

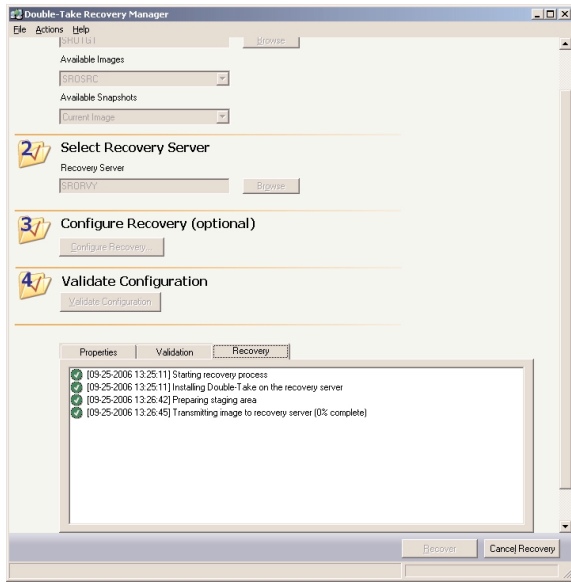
In some cases, not every volume on a server needs protected. Double-Take Server Recovery Option provides the option to exclude one or more data volumes at either protection or recovery time based on an organization's specific requirements.



A single solution for continuous, whole-server protection and recovery

Fast and easy recovery with Recovery Manager

The Recovery Manager application, included with the Double-Take Server Recovery Option, allows you to quickly and easily configure and perform recovery, including validation steps that ensure recovery goes as planned. When a system volume or entire server fails recovery of both system state and data can be performed from the Recovery Manager, reducing the number of steps needed to recover a server to its original state. The Recovery Manager also eliminates many of the steps required by traditional backup and restore solutions by requiring only a standard Windows OS on the new system.



Supports dissimilar hardware

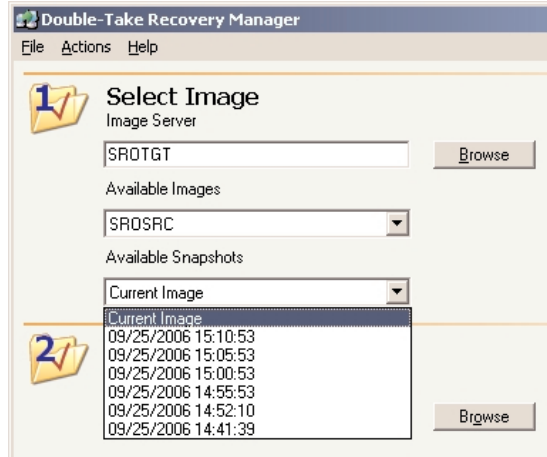
By leveraging the unique "system state" replication and restoration capabilities of Double-Take, the Double-Take Server Recovery Option can account for a variety of differences between the original production server and the recovery system. This process grafts the "personality" of the original system onto the new server, prohibiting the application of incompatible differences to ensure that the operating system and applications work properly once restoration is complete. The Double-Take SRO can also be used to recover any configuration of physical and virtual machines, allowing for flexibility with how systems and capabilities are restored by administrators.

Snapshot Support

Double-Take SRO integrates with the Microsoft Volume Shadow Copy Service to allow you to schedule and recover from up to 512 point-in-time copies of protected data.

Broad Application Support

Double-Take Server Recovery Option protects the entire server so there is no need for specialized application support as is the case with tape backup solutions.



About Double-Take® Software

Double-Take® Software provides the world's most relied upon solution for accessible and affordable data protection for Microsoft® Windows® applications. The Double-Take product is the standard in data replication, enabling customers to protect business-critical data that resides throughout their enterprise. With its partner programs and professional services, Double-Take delivers unparalleled data protection, centralized back-up, high availability, and recoverability. It's the solution of choice for thousands of customers, from SMEs to the Fortune 500 in the banking, finance, legal services, retail, manufacturing, government, education and healthcare markets. Double-Take is an integral part of their disaster recovery, business continuity and overall storage strategies. For more information, please visit www.doubletake.com.

Double-Take Software Headquarters

257 Turnpike Road
 Southborough, MA 01772
 Phone: +1-800-964-0185 or +1-508-229-8483
 Fax: +1-508-229-0866

Double-Take Software Sales

8470 Allison Pointe Blvd. Suite 300
 Indianapolis, IN 46250
 Phone: +1-888-674-9495 or +1-317-598-0185
 Fax: +1-317-598-0187



Get the standard today: www.doubletake.com or 888-674-9495

