

# SQLconfig™ Change and configuration management for SQL Server™

## OVERVIEW

Idera's SQLconfig monitors database server hardware, operating system (OS), SQL Server instance and database configuration, providing both automated change notification and comprehensive reporting on changes in your SQL Server environment. In addition, SQLconfig allows you to fine-tune and control SQL Server configuration across your entire infrastructure by setting a master or 'gold' server. You can ensure that new servers match the 'gold standard' configuration and that existing servers remain compliant.

## WHY SQLconfig?

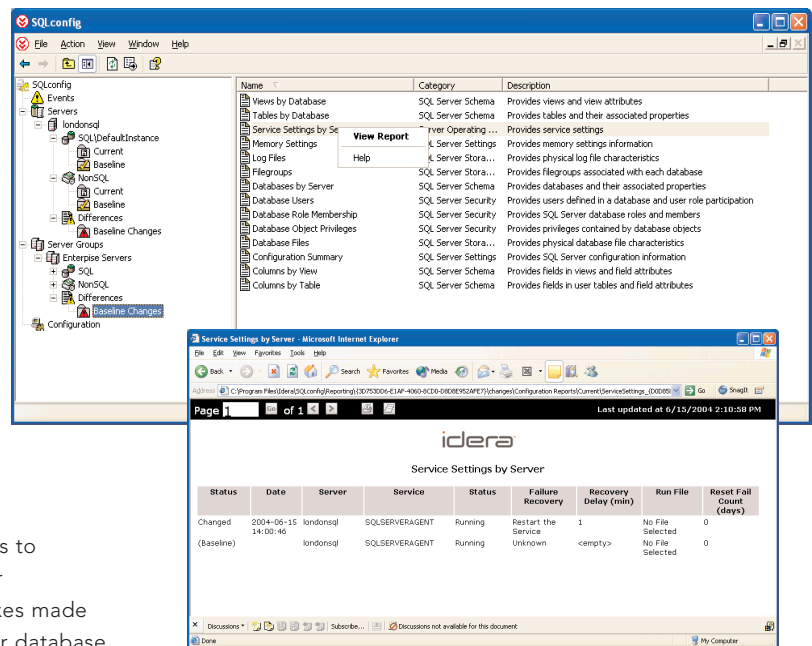
In a typical enterprise, many people make changes to database servers that can compromise SQL Server performance and availability. Undetected quick-fixes made during a fire drill often cause long-term trouble for database managers. Change reports and automated notification ensure database managers are aware of and can easily respond to configuration changes.

You can also streamline and ease your workload when managing multiple SQL Servers with SQLconfig. By identifying a 'gold standard' server, then grouping and comparing machines to your model, you can use SQLconfig to identify key configuration differences between multiple servers. This information helps you maintain identical configurations and eliminates differences as a problem source, reducing time spent investigating problems.

## KEY BENEFITS

**Automates change detection** — Notifies you when configuration changes occur, allowing you to evaluate and quickly correct undesirable modifications. SQLconfig identifies changes to database schema, settings and security, as well as to server hardware, OS and Windows security across dozens or even hundreds of servers.

**Assures common settings across database servers** — Provides a standard, or 'gold', master feature. You can easily configure a model server and measure groups of servers against your model. SQLconfig provides automatic notification if any server deviates from the model. Compliance functions are not compromised if you decommission or change your model server.



**SQLconfig creates a baseline for your managed database instances, providing a detailed snapshot to compare future data against.**

**Eases production rollouts** — Enables you to validate the results of rolling out changes from your development environment into production. SQLconfig's comprehensive change reports will highlight any discrepancies, ensuring a smooth transition for your users.

**Maintains configuration data** — Gives you constant access to the baseline and current configurations, as well as a complete change history. In the event of a catastrophic server failure, you can use this key information for quick recovery. In normal operations, this is useful for planning server upgrades and simplifying routine inventory reporting.

**Creates rich reports** — Presents comprehensive configuration information with well-organized reports detailing the status of your enterprise hardware, OS, OS security, database-schema settings and security settings.

**Integrates with management systems** — Functions as a standalone product or integrates with management systems, such as Microsoft Operations Manager 2000 (MOM) and NetIQ's AppManager Suite (AppManager).

# SQLconfig™ (continued)

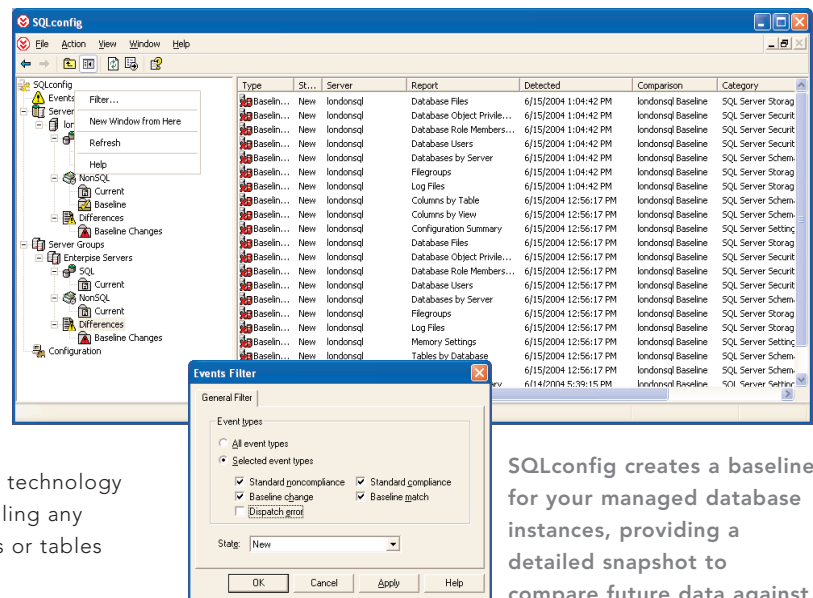
## TECHNICAL FEATURES

- Provides a scalable, efficient three-tier architecture with ActiveAgent technology, SQL Server database and Microsoft Management Console (MMC) interface
- Uses MMC technology, providing control over all product features and the ability to be co-loaded with the SQL Server Enterprise Manager console or other MMC snap-ins
- Publishes configuration change events to the event log for easy integration with AppManager and MOM
- Includes a URL link to detailed change reports within change events
- Automates data collection using ActiveAgent technology for massively parallel collection without installing any components, DLLs, scripts, stored procedures or tables on the SQL Server instances
- Offers more than 50 reports in six categories that provide easy access to hundreds of individual configuration settings
- Allows grouping of similar (or any desired) database servers, providing easy management of multiple or single servers
- Produces out-of- and in-compliance change events based on selected configuration elements from model servers
- Provides change history for individual machines or groups of machines
- Supports SQL Server in a MSCS clustered environment
- Publishes change and configuration reports by computer group in an easily accessible Web console

## SYSTEM REQUIREMENTS

### Operating Requirements:

- Intel Pentium 300 MHz processor or equivalent
- 128MB RAM
- 200MB free disk space
- Windows 2000, Windows XP or Windows Server 2003
- Microsoft Word Viewer 97/2000
- Internet Explorer 5 or later
- Microsoft Data Engine (MSDE) or SQL Server 2000
- Monitor capable of displaying 256 or more colors and a screen resolution of 800x600 or greater (recommended system will support 16 million colors on a 1024x768 screen resolution monitor)



SQLconfig creates a baseline for your managed database instances, providing a detailed snapshot to compare future data against.

### Managed Database Environment:

- SQL Server 7.0 and SQL Server 2000, running on either Windows NT 4, Windows 2000, Windows XP or Windows 2003
- Database servers must support NetBIOS protocol

## CONTACTS

### Idera Corporate Headquarters

802 Lovett Boulevard  
Houston, TX USA 77006

**Toll-free:** 1.877.GO.IDERA

**Phone:** 713.523.4433

**Fax:** 713.862.5210

**www.idera.com**

**Sales Information:** sales@idera.com

**General Information:** info@idera.com