



Simply better network security.™



ThreatWall 250

ThreatWall 450

ThreatWall 650

# ThreatWall

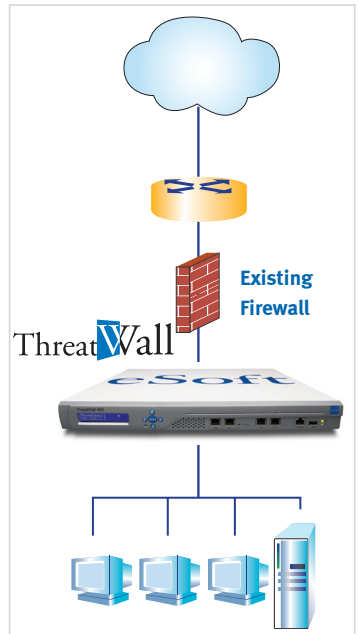
## Features at a glance:

- Multi-Protocol Anti-Virus
- Intrusion Prevention
- Complete Anti-Spyware
- Email Content Filtering
- Advanced Anti-Spam
- User-based Spam Quarantine
- Web URL and Content Filtering
- Email and Webmail Server

## ThreatWall™ Content Security Gateway

### The Industry's Most Complete Secure Content Management Solution

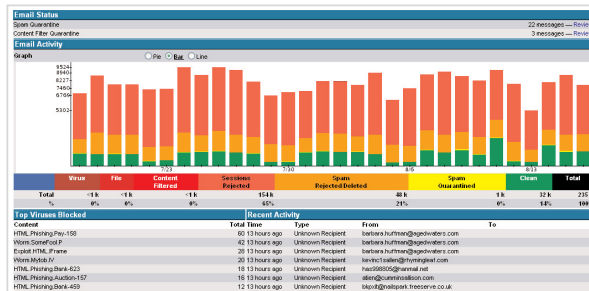
Threats do not discriminate. Just because your business doesn't employ 10,000 people doesn't mean it doesn't have the same Internet security requirements as those that do. eSoft's ThreatWall Internet security solutions were designed specifically for small and mid-sized businesses with an existing firewall, that need enterprise-class deep packet protection without an enterprise-class price tag. By providing an expandable platform that is simple to install, configure, and manage, eSoft gives you the peace-of-mind to focus on your business, not your network.



### ThreatWall Appliances are Powerful

ThreatWall appliances were purpose-built to withstand with the rigours of Deep Packet Inspection security, augmenting the existing firewall to provide critical security functions such as anti-virus, anti-spam, anti-phishing, mail content filtering, web content filtering and more. From scanning millions of email messages a day for spam, viruses, trojans, phishing or general inappropriate content, to filtering thousands of concurrent web sessions for ethical or appropriate use, ThreatWall appliances deploy seamlessly into the existing network and provide silent, high-speed Deep Packet security. Whats more, ThreatWall appliances scan both

inbound and outbound traffic in transparent in-line mode, or in proxy relay mode, providing ultimate deployment flexibility for virtually any network topology.



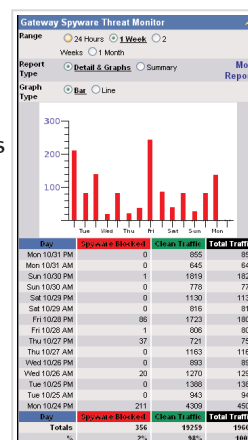
## ThreatWall Security Solutions are Easy to Use

Within minutes of a simple, automated installation, ThreatWall will be stopping intrusions, Spam, Spyware and Viruses before they reach your mail server protecting you from the risks and liability resulting from inappropriate web and email use. ThreatWall guides you through the entire installation process with easy-to-understand wizards, as well as simple and intuitive monitoring and reporting tools. Once your ThreatWall is up and running, creating users and groups, web surfing policies, and email content policies is a snap. The browser-based interface provides simple, well-organized access to all configuration, management, and reporting features.

### ThreatMonitor - Vital Threat Statistics at Your Fingertips

ThreatMonitor is a graphical management tool designed to help IT managers better understand the behavior of network traffic, as well as network threat activity.

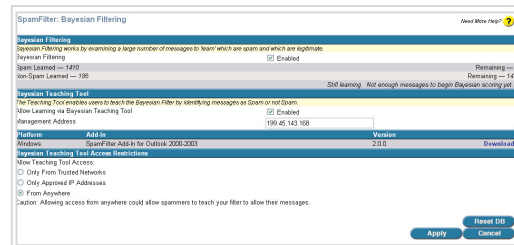
ThreatMonitor collects, interprets and graphically summarizes critical system and network information to help the IT manager make more informed decisions regarding network usage and security policies. Threat Monitor provides a graphical window into each security subsystem, including Spyware, Intrusion Prevention, Virus, Spam and system statistics.



### SpamFilter at a Glance

- Automated Signature Updates
- Real Time Black Lists
- Customizable White and Black Lists
- Address Verification, Sender ID/SPF
- MIME Compliance Checking
- Bayesian Filtering
- Heuristic Analysis
- Rule-based Spam Scoring

**SpamFilter** - eSoft's Spam Filter prevents unsolicited e-mail from reaching workstations on your network, and can be configured to automatically reject, redirect, quarantine or tag and deliver filtered emails. To prevent unintended filtering, SpamFilter allows you to create your own "white lists" of trusted senders, such as customers and business partners. eSoft's proprietary SpamFilter incorporates the latest Spam fighting technologies, including Bayesian Filtering, Historical Averaging, enhanced Heuristic Analysis, and Microsoft's Sender ID technology.



### Gateway Anti-Virus at a Glance

- Scans SMTP, POP3, FTP and HTTP Traffic
- Automated Signature Updates
- Body and Attachment Scanning
- Customizable File Type Blocking
- Scan Incoming and Outgoing Messages
- Summary and Detailed Reporting

**Gateway Anti-Virus** - eSoft's Gateway Anti-Virus engine prevents costly network shutdowns by scanning and removing infected e-mail messages before they enter your network. Because this technology resides on your ThreatWall appliance, infected messages and attachments are eliminated before they enter or leave your network. Simple to use management tools provide automatic Virus notification and Virus signature updates at a frequency you set.

### **Email Content Filtering at a Glance**

- Helps Enforce Company Email Policies
- Helps Enforce Regulatory Compliance
- Keyword and Phrase Matching
- Regular Expression Matching
- Custom Quarantine and Forwarding

### **SiteFilter at a Glance**

- Automated Signature Updates
- User/Group Specific Policies
- Active Directory Integration
- Time-based Access Restrictions
- 7+ Million Categorized URLs
- 40 Defined and Customizable Content Groups
- Customizable Access-denied Message
- Configurable URL and IP-based Blocking
- Custom URL Lists

### **IPS at a Glance**

- Inbound and Outbound Scanning
- Automated Adjustment for False Positives
- Real-Time Logging and Reporting
- Automatic Classification of New IPS Rules
- Granular Control of Rules and Actions
- Automatic Tuning with Initial Configuration
- Wide Array of Protected Applications
- Automatically Updated Signature Database
- Detailed Threat Information

### **Anti-Spyware at a Glance**

- Inbound/Outbound Spyware Protection
- Protection from Spyware Delivered by Email, Web, FTP, IM and P2P
- Block Adware, Browser Hijackers, Spyware, Keystroke Loggers, and Trojans
- Stops Embedded and Drive-by Installs
- Stops Browser Exploits
- Threat Level Policies
- Compressed/Zippered Files
- Graphical Reporting and Statistics

### **Complete Mail Server at a Glance**

- POP3/IMAP Server
- User/Group Definable Email Privileges
- Distribution Lists, Autoresponders
- Configurable Forwarding and Aliasing
- Sender/Local Address Verification



**Email Content Filtering** - eSoft's Email Content Filtering technology helps enforce company email policy as well as regulatory compliance (e.g. HIPAA, SOX), by scanning all emails for admin-defined keywords, phrases or regular expressions. Emails found to be in violation are automatically forwarded to an IT or non-IT (e.g. HR) administrator for further action.



**SiteFilter** - Filters Internet content according to your organization's security policies and user guidelines. It allows you to manage Internet access ranging from simple access restrictions to complete blocking of any site. SiteFilter includes a base access control list of more than seven million URLs covering 12 languages, all categorized into 40 different content groups, ten of which you can define and customize. SiteFilter enables implementation of highly customized and detailed access restrictions - by category, user, day, and time - for improved business productivity and liability control.

SiteFilter: Custom List Need More Help? ?

Action	Category	Protocol	Site/Pattern
<input type="radio"/> Allow	Not Applicable	Any	*.ca.com*
<input type="radio"/> Allow	Not Applicable	Any	*.esoft.com*
<input type="radio"/> Screen	User defined category 0	Any	*.*
<input type="radio"/> Allow	Not Applicable	http	24.16.78.34
<input type="radio"/> Allow	Not Applicable	https	64.83.53.86
<input type="radio"/> Screen	User defined category 1	http	199.45.143.249
<input type="radio"/> Allow	Not Applicable	Any	esoft.com*
<input type="radio"/> Allow	Not Applicable	http	foxnews.com
<input type="radio"/> Allow	Not Applicable	http	hotmail.com
<input type="radio"/> Allow	Not Applicable	http	www.hotmail.com

Add Delete Done



**Intrusion Prevention Service (IPS)** - Automatically detect and block malicious network intrusions, Worms and Trojans that occur at the network and application layers. In addition, policy controls allow administrators to block instant messaging and peer-to-peer applications. Intrusion Prevention blocks attacks in real-time, automatically logging the attack for reporting or forensic analysis. Signature updates are automatically downloaded to ensure protection from the latest threats. Intrusion Prevention is critical for IT managers trying to provide complete network and application protection.



**Gateway Anti-Spyware** - Combines signature matching, intrusion prevention and web filtering techniques to detect and prevent Spyware from infecting the network, whether delivered by web, email or other delivery mechanisms. Infected computers on the internal network are also detected and blocked from sending private data to Internet collection sites. Proactive security at the gateway stops new Spyware infections, prevents confidential data from leaving the network and eliminates resource drains that result from reactive measures of constantly scanning and cleaning each computer on the network.



**Complete Mail Server** - Add a powerful, robust Internet mail server with many standard features for easy, low maintenance hosting. Users can send and retrieve their email using any popular POP3/IMAP client (Outlook, Outlook Express, GroupWise, etc.) In addition to standard features- distribution lists, aliasing and out of office autoresponders, it also supports more advanced mail security features like sender ID.

## Part Numbers

## Hardware

ThreatWall 250	TW-250
ThreatWall 450	TW-450
ThreatWall 650	TW-650

## Hardware Care - 1 Year Extended Warranty

ThreatWall 250	HWC-250-1
ThreatWall 450	HWC-450-1
ThreatWall 650	HWC-650-1

Please visit [esoft.com](http://esoft.com) for additional part numbers

## Technical Specifications

	ThreatWall 250	ThreatWall 450	ThreatWall 650
Chassis	Desktop	1u Rackmount	2u Rackmount
Memory	256 MB DDR2, 533 MHz	512 MB DDR2, 667 MHz	1 GB MB DDR2, 667 MHz
Interfaces	4 Fast Ethernet	4 Gigabit Ethernet	6 Gigabit Ethernet
Storage	40 GB IDE	80 GB SATA	Dual 120 GB SATA w/RAID-1 mirroring
LAN Bypass / Failthrough		Optional	Optional
Email's /hour (with Email Tpak)	7,500	20,000	75,000
Active Users	Unlimited	Unlimited	Unlimited
Transparent Authentication	✓	✓	✓
Transparent Mode	✓	✓	✓
Relay (Proxy) Mode	✓	✓	✓
Real-time THreatMonitor	✓	✓	✓
User/Group-level Quarantine	✓	✓	✓
Automatic Updates	✓	✓	✓
User Authentication Server	✓	✓	✓
SMTP Authentication and Support	✓	✓	✓
Event-driven Email Alerts	✓	✓	✓
Storage/Settings	✓	✓	✓
Backup/Restore	✓	✓	✓
RADIUS Authentication	✓	✓	✓
LDAP Authentication	✓	✓	✓
Power Supply	100-240v~1.5A 47-63Hz	100-240V~6.0A 60-50Hz	100-240V~6.0A 60-50Hz
Weight	3.5 lbs. / 1.59 kg.	16.5 lbs. / 7.5 kg.	19 lbs. / 8.63 kg.
Dimensions	9" x 6.5" x 2" 22x16.51x5.08cm	17.5" x 18" x 1.75" 44.45x45.72x4.44cm	17.5" x 18" x 3.5" 44.45x45.72x8.89cm
UL/CUL, TUV, CE	Yes	Yes	Yes
FCC and VCCI	Class B	Class B	Class B